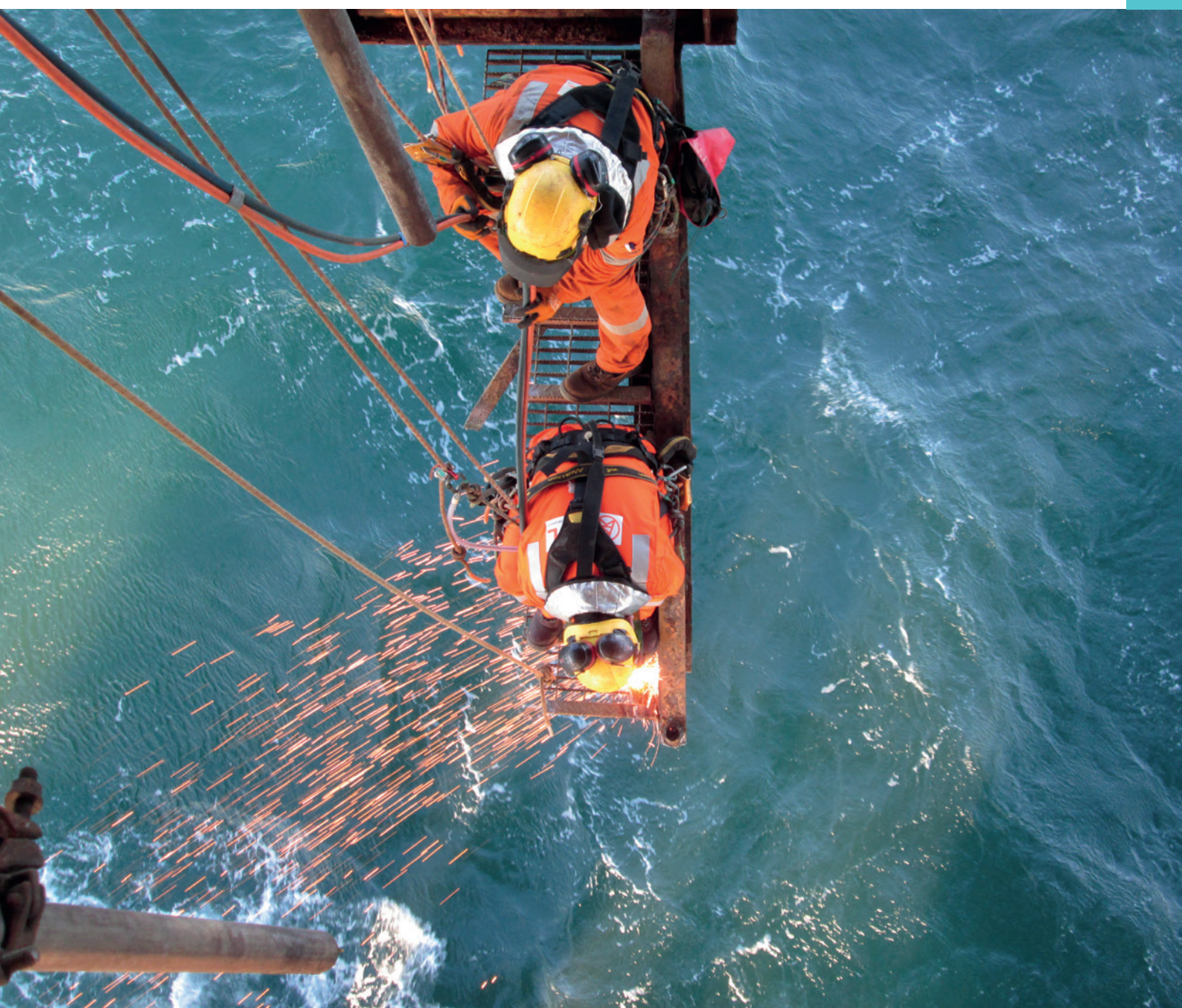




# DSL

A JOULON COMPANY







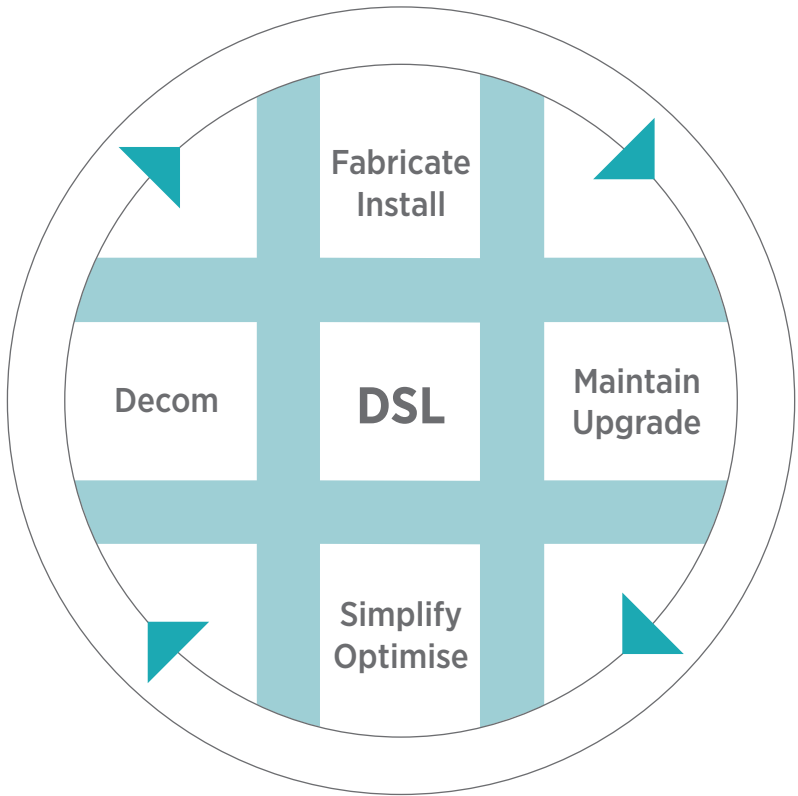
# Introduction to DSL

## Established contractor, safe, high quality, reliable and professional

Derrick Services (UK) Limited (DSL) is an established Offshore and Onshore Contractor providing both the global Oil and Gas and Renewables sectors with a broad spectrum of products and services. Established in 2004 DSL has gained a proven reputation within the industry for safety, quality, reliability and professionalism. In 2016 DSL was acquired by Joulon an Asset Integrity platform to grow the business.

With a background in specialised manufacturing, fabrication supply and servicing for global on/offshore production & drilling operators, DSL has evolved in line with the international oil, gas and renewables industry to safely provide upstream support services at all junctures of our clients’ asset lifecycle.

Whatever stage of the Asset lifecycle you are operating, DSL can support you with highly specialised and efficient services.



## Summary of our capabilities

Whilst widely recognised for its expertise relating to drilling structures, DSL has over the last **17** years diversified into Decommissioning, Simplification and Asset Integrity and has played an integral part in numerous large projects in the North Sea and International waters consisting of but not limited to Fabrication, Construction, Decommissioning, Simplification and Asset Integrity scopes.

## Fabrication

DSL has extensive Fabrication facilities in the UK and UAE and routinely undertakes structural and pipe-work fabrication for a lot of the major operators, DSL is **experienced in PED Module H** so subsequently can Design, Fabricate, Test and Inspect pressure piping, in house all within the scope of the company’s ISO 9001 accreditation.

## Asset Integrity & Decommissioning

At DSL we understand how a well-planned and managed Asset Integrity and Decommissioning programme will prevent project overrun and additional project costs .so subsequently we have built our capability to offer Design and Engineering solutions up front and then the resources to execute the work scope from conception through to completion. Included within its service capabilities DSL provides a range of industrial Asset Integrity and Decommissioning solutions, focusing on integrated service

delivery and cost effective and timely solutions for our customers. Our scope of services and capabilities enable us to provide multi-disciplined personnel utilising latest techniques to deliver tailored solutions for a range of work activities, safely and efficiently.

## Turnkey Solutions

Whether a small-scale work scope or a large multi-disciplined project DSL is able to offer a full turnkey package for Asset Integrity and Decommissioning projects. Starting with Feasibility studies, Offshore surveys by qualified engineers, Creation of risk assessments, Design and Fabrication, through to Installation or Decommissioning for both onshore and offshore assets to ensure that they can operate for the foreseeable future providing a safe and environmentally friendly system of work for its operatives. Then when the asset finally reaches the end of its life cycle DSL can assist with its removal and disposal.

## Collaboration

Our successful track record of delivering projects in a safe, reliable and efficient manner has enabled us to develop long term relationships with our clients. By working as an integrated team with our client personnel we work together to find innovative solutions to potential mid project problems, therefore mitigating downtime on the project.

Our People  
[Page 04](#)

What Sets DSL Apart?  
[Page 05](#)

Our Quality, Health, Safety & Environment  
[Page 06](#)

Design & Engineering  
[Page 08](#)

Project Management  
[Page 09](#)

Fabrication  
[Page 10](#)

Asset Integrity  
[Page 12](#)

Decommissioning  
[Page 14](#)

Electrical and Instrumentation  
[Page 16](#)

Rope Access Services  
[Page 17](#)

Our Offshore Personnel  
[Page 18](#)

DSL pride ourselves on being able to deliver fast and efficient ‘turnkey’ solutions from design, engineering and project management through to fabrication and installation and decommissioning both offshore and onshore to major clients around the globe.





# Our People

DSL teams know that the clients’ priority is to minimise downtime on the asset ASAP and our people can achieve this without compromise to safety.

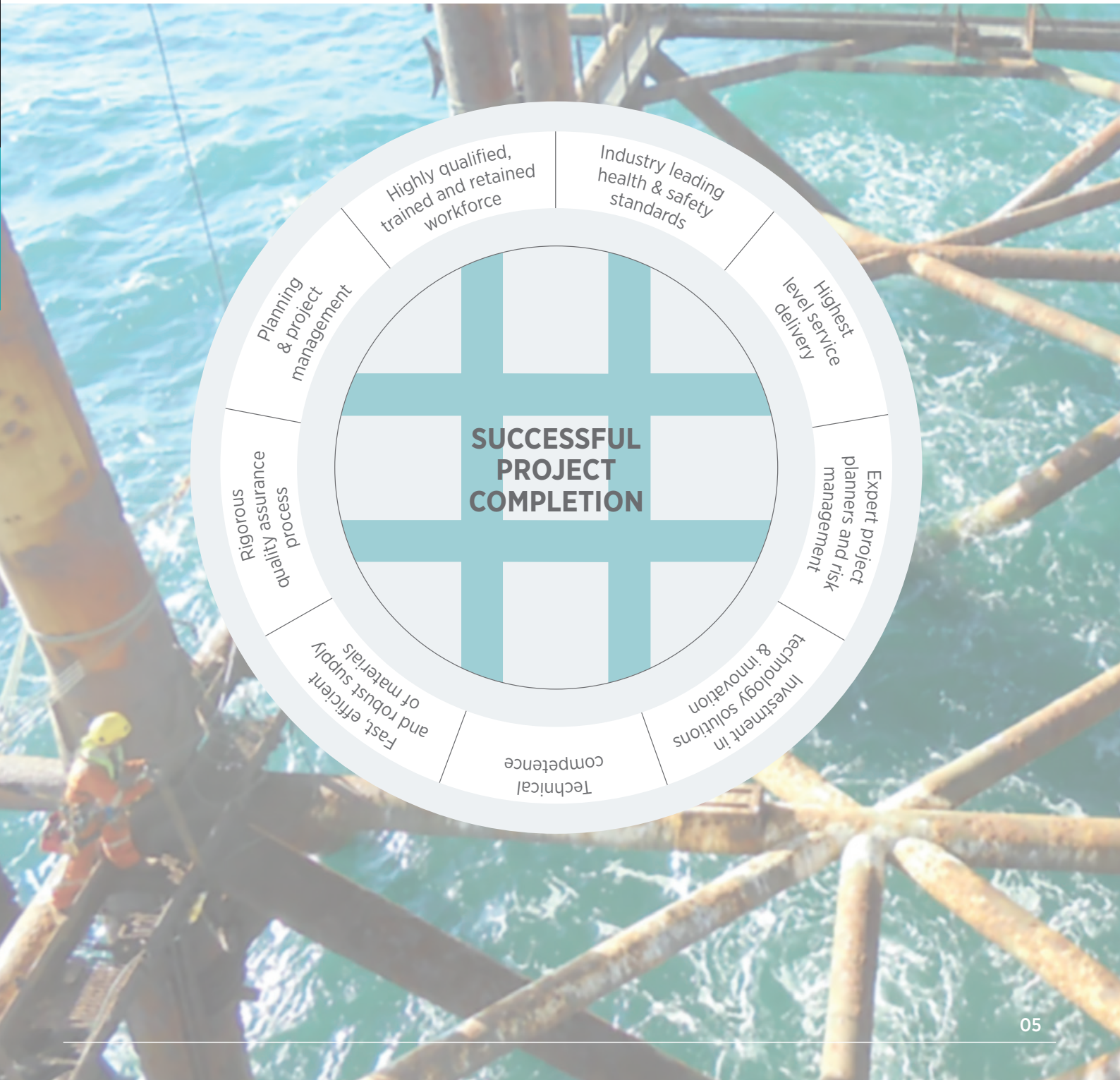
- We employ some of the most experienced personnel in the industry, this gives us and the client the reassurance that we will arrive on the asset complete the work-scope safely and efficiently and to the highest of standards.
- Site teams working for DSL are experienced to deliver a broad range of services – from a full platform upgrade, to a vent stack removal project or process pipework installation.
- Due to the diverse range of services and support we provide to customers, our team members gain a very wide knowledge of various work scopes, making them some of the most skilled, flexible and adaptable people you could hope for on your platform/ installation. Many of them have worked with us for 20 years or more, creating a priceless knowledge base and highly productive client/team working relationships.
- Our people are loyal to DSL because they know that DSL regards their safety as the single most important element of our operations. They are supported by one of the most comprehensive safety management systems in the industry to give them the maximum protection.
- DSL’s focus on their welfare has created a mutual trust over the years and they contribute valuably to our continued improvement of health and safety standards, which in turn ensures the delivery of highly successful projects.

# What sets DSL apart?

DSL has a remarkable record of successful project delivery and completion, due to 9 factors which combine to create a single factor that sets us apart.

That DSL factor is:  
 The ability to understand clients’ operational priorities while planning, designing then integrating highly specialist technical support and supply with safely managed, high quality service delivery.

This is supported and evidenced by our consistently strong performance in FPAL benchmarking. Further information can be found in our QHSE pages at [www.derricks.com](http://www.derricks.com)





## Safety first, backed up by a robust Quality Management System

DSL is dedicated to complete integrity of its operations and this is reflected in our commitment to Quality and HSE. DSL operates a comprehensive Quality Management System which complies with both ISO 9001:2015 and API Specification Q1.



Every time you introduce a new vendor into your operations you increase the element of risk. DSL's track record and continued focus on HSE gives you the confidence that in choosing DSL you are mitigating that risk to a minimum.

- DSL is committed to ensuring the safety of our own employees, clients' employees and the general public. As part of this commitment, DSL's Safety Management System is registered to ISO 45001:2018.
- DSL understand that we have a duty of care to ensure our excellent environmental performance is maintained across all its business operations and strive to provide the necessary organisation, commitment and training to meet this obligation. The DSL management team firmly believes in, and is committed to monitoring and improving environmental performance, pollution prevention and environmental protection.
- Subsequently DSL operates and adheres to an environmental management system certified to ISO 14001- 2015.
- The fact that most of our work is carried out at height, demands that our Safety Management System, which is in accordance with HS 65 (G), has to be as absolutely comprehensive and protective of our personnel as possible.
- The progressive development of our procedures and method statements will continue to evolve in our absolute pursuit of risk minimisation. The significant amount of height working man days we perform each year without incident is a testament to both the investment to date and our continued diligence towards the protection of our personnel.
- As part of our commitment to QHSE, DSL has invested in the design and manufacture of its own training Derrick to train site personnel. Our training and competency system for rig builders excels anything that anyone has attempted in our industry - this provides us with the safe knowledge that we are doing everything possible to protect and enhance the safety of our people, whilst giving you the confidence to know that the people we supply to you know exactly what they are doing, and are doing it safely.

"The work has been completed without a safety incident and I have had nothing but extremely positive feedback on the offshore team and their professionalism. Throughout the onsite work-scopes personnel have been extremely proactive with supervisors demonstrating good leadership and competence in implementing the requirements of the work-scope."

**Commercial Director,  
Compagnie Tunisienne De Forage**

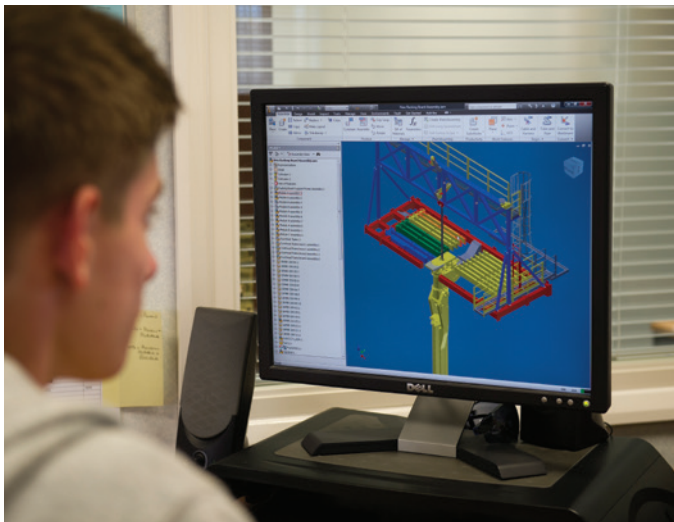




Accurate Engineering and design that comes from an in-depth knowledge of delivery

DSL's ability to design and engineer solutions as well as deliver, means that we are involved in client collaboration at the planning stage of projects. It enables us to suggest highly cost-effective solutions in the early stages of your project, enabling you to budget for and plan your schedules to maximise productivity.

Our deep implementation and construction knowledge feeds into the design process to ensure that your design is the most practical solution possible.



- With a plethora of Design Engineering experience within the O&G and Renewable sectors, DSL's in-house design and engineering resource can provide a broad spectrum of Design and Engineering services that encompass electrical, Instrumentation mechanical, piping and structural, all this is supported by the latest design software packages.
- DSL has permanent established engineering personnel in the United Kingdom and United Arab Emirates that can work from their base or be sited within the client's facilities to work as part of an integrated project team.
- We can design and engineer to meet client specific requirements or fabricate from client or client's third party supplied drawings.
- Being accredited to PED module H we can design, fabricate, Inspect and final test pressure pipework in house which in turn increases efficiencies.
- DSL can mobilise our engineers to site in order to conduct detailed site surveys, identify specific site issues, collect appropriate drawing and dimensional data and then prepare engineered solutions for client submission and approval.
- Our engineering resource has an excellent track record across the industry for delivering a "right first time product" subsequently mitigating the need for costly and time consuming re-works.
- Platform upgrade, refurbishment and decommissioning projects continue to provide our engineering teams with the challenge to provide innovative effective solutions.
- Additionally, for projects such as general fabrication, we can either design your requirements in-house or provide additional support to your own engineering teams on an ad hoc basis for engineering and / or draughting support.
- DSL can despatch structural or design engineers offshore in order to conduct site surveys, understand specific site issues, collect appropriate drawing and dimensional data and then prepare engineered solutions for client submission and approval.

Successful project management with a 'one team' ethos

DSL has successfully developed teams of highly experienced, well-motivated and enthusiastic project management, engineering and design personnel that work effectively together and have years of experience delivering well-structured, successful, high-quality projects for many of the Oil & Gas Industry Majors.

At DSL we firmly believe in sharing in our clients' vision and this has enabled us to establish long standing relationships as we consistently strive to deliver clients' goals and expectations. DSL project management will liaise with client project management as early as possible to facilitate HAZIDs HAZOPS planning, logistics, materials and work execution through to the completion of the project.



- We are capable of supporting our clients' projects by taking responsibility and delivering performance by using effective systems and procedures, at any time, worldwide.
- DSL will have a comprehensive offshore project management team throughout the project from the concept phase through to completion. Our Project Management team and support services are made up of predominantly long-term employees who have worked together for years.
- At DSL we strive for faster project delivery and production of cost savings for the client, whilst managing all aspects of the project with safety as the prime focus.
- These core values have enabled us to develop confidence with our client base time and time again.
- At contract award DSL's approach is to assign a 'Named' dedicated Project Manager to each and every project as we firmly believe that the key to any successful project is communication between all the parties involved, therefore we have built our ethos around the 'One Team' approach which ensures that not only do we engage closely with our clients but also your sub-contractors and suppliers.
- DSL understands that detailed project planning plays a crucial part in a successful project so subsequently to ensure that a project meets its cost and schedule objectives, DSL's project team will include a Project Planner/Cost controller utilising Primavera P6 software to ensure that the project deliverables are continuously and consistently reported.
- Our project teams all work closely together, many have been working together for 20 years, and much of our success is due to continued sharing of lessons learnt and a collaborative approach to resolving issues and risk.

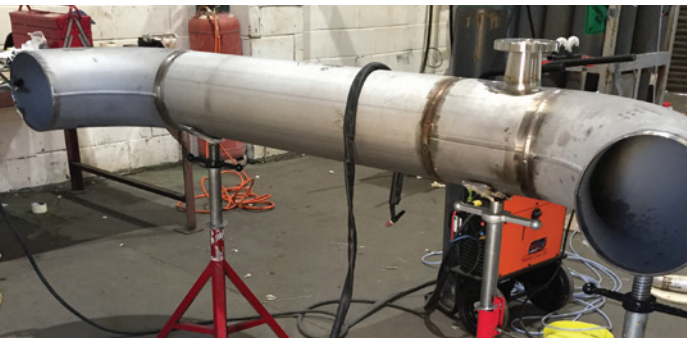


# Fabrication

## Our on-site fabrication facility gives you a bespoke, high quality supply option

DSL undertakes a wide range of fabrication projects including offshore structures and deck extensions, pressure vessels/tanks, high and low-pressure pipework, subsea structures and associated components.

- Our fabrication facilities are licensed to both API Q1 and ISO 9001 and these reflect our commitment to the high standard and quality of our fabricated products.
- With our in-house engineering capability, you have the option of either providing us with the drawings of the components that you require to be fabricated or we can design and build to your requirements.
- You will always receive a comprehensive manufacturing data book with your order to ensure that you have a complete record of all the manufacturing details relevant to the order.
- DSL has a proven track record for responding quickly to customer requirements for urgent orders, ensuring that client projects are not delayed. Our priority is to ensure we work fast to efficiently meet your immediate project needs.



- Our Onshore support is made up of but not limited to the following personnel
- Engineering Manager
  - Fabrication Manager
  - Project Manager
  - Offshore services Manager
  - Structural Designers
  - Structural Engineers
  - Piping designers
  - Piping engineers
  - Project engineers
  - E&I engineers
  - Planning Engineers
  - Procurement Department
  - Training and Competency
  - HSE Manager
  - QA-QC Manager
  - Personnel Logistics Department
  - Rope Access Manager
  - Rigging & lifting Manager Stores & Materials personnel
  - HR/Recruitment Team
  - Inspection Manager
  - Administration Personnel



DSL fabrication workshops in the UK and Middle East are well equipped for fabrication work and with our in-house profiling facilities a wide range of projects can be easily undertaken

## Structural Fabrication

- DSL has built a reputation for producing high quality structural fabrication for onshore and offshore assets. Our general fabrication capability encompasses everything from hand rails, gratings etc through to deck extensions, skids, sub-sea structures, decommissioning strengthening steel work etc.
- Structural fabrication can be coated to client specification and code onshore prior to shipping, or dispatched in a blast and prime condition for coating post-installation or even self-colour for decommissioning purposes.
- All fabrication is processed through our comprehensive QA/QC process prior to delivery to ensure our 'right first time' process is maintained and our onshore personnel are vetted to the same high standard as our offshore personnel ensuring that our workshop personnel are among the highest calibre in the industry.

## Piping Fabrication

- DSL is a PED module H accredited fabricator thus allowing us to design, fabricate and complete final inspection and testing of pressure vessels/tanks, high and low pressure pipework in-house, this process is supported by a robust approved Quality system. Having this capability in-house allows us to react swiftly and have fast turnaround times subsequently mitigating potential costly down time on the asset.
- LTCS piping and structural fabrication are completed within one of our fabrication workshops and Duplex / Super Duplex / Stainless piping fabrication is completed within its own dedicated workshop to mitigate cross contamination.
- Our piping fabrication service includes but not limited to Duplex/Carbon flow lines, risers, tie-in spools, utilities pipe work, process pipe work. All pressure vessels and pipe work will carry a CE identification mark accompanied by the identification number of the notified body responsible for surveillance.

The client will always receive a comprehensive manufacturing data book with their order to ensure that you have a complete record of all the manufacturing details relevant to the order.



## Our ability to undertake high quality asset integrity and maintenance projects is due to our in-depth knowledge of construction

Operators have recognised that the world’s oceans are full of aging assets that are expected to outlive their original field lives due to new hydrocarbon retrieval technologies. With this comes the realisation that the assets have to be brought up to specification so they can operate for the foreseeable future providing a safe system of work for its operatives and the environment.

The aging assets have redundant equipment that regardless of not being in service has to be maintained at a cost to the operator to prevent it becoming a safety or environmental issue. DSL has a proven reputation within the O&G and Renewables industries for executing Asset Integrity and Fabric Maintenance projects. We are valued for focusing on integrated service delivery along with and cost-effective and timely solutions for our clients.

DSL has a proven reputation within the oil/gas industry for routinely undertaking general asset integrity and fabric maintenance projects. We are valued for focusing on integrated service delivery along with and cost-effective and timely solutions for our clients.



## Our Approach

1. Our solution starts with offshore surveys by qualified engineers, creation of risk assessments, design (CAD) & fabrication, through to installation or decommissioning of both onshore and offshore assets. DSL will survey the equipment, develop the applicable work packs, complete the work scope and reinstate the working environment as a safe area of work ensuring that your asset will continue its life ‘Fit for Purpose’.
2. Whether a small-scale or a large multi-disciplined project is required, DSL is able to provide a turnkey solution, incorporating planning and assessment, site surveys and on/off-site project management and work scope execution.
3. Where the Integrity of existing pipework, structural steelwork, and pressure-containing systems is found to be poor and requires repair or replacement, DSL is able to provide a seamless approach through its ‘in-house’ design, engineering, and fabrication departments.
4. Through our single point integrated design, engineering, and fabrication capability, DSL is able to support any offshore activity with speed and accuracy, ensuring a smooth, timely project delivery.
5. Our successful track record of delivering projects in a safe and reliable manner has enabled us to develop long-term relationships and retain contracts with our client base.

- Piping repair or replacement
- Structural repairs or Installation of new structural steel work
- Redundant equipment removal minimizing routine maintenance on unused plant
- Electrical & Instrumentation Work scopes and personnel supply
- Supply of Maintenance personnel
- Rope access personnel supply (IRATA Level 1, 2 & 3) all trades
- Supply of Black Trade labour, Welders, Platers, Pipefitters, Riggers, Inspectors
- Process system simplification
- Cold cutting services
- Rigging and lifting services
- Full asset DROPS surveys minimising potential dropped object incidents
- Inspection activities Ultrasonic, Magnetic Particle and Eddy Current, under deck inspections.



# Decommissioning

## DSL helps make safe decommissioning happen efficiently

In recent years DSL has successfully developed its reputation within this emerging and active sector by providing services covering all stages of a project from Conception through to Completion.



## Safety of personnel and the environment will always be our priority

- DSL has a successful track record in working closely and supporting North Sea and international operators with all aspects of their assets late life, simplification and decommissioning projects.
- To date we have been involved throughout various stages in some challenging decommissioning projects. Details of individual projects available on request.
- DSL delivers decommissioning projects from concept to in depth detail by planning the execution of the decommissioning programme, ensuring that the offshore operation will be technical and economically safe and robust.
- DSL's approach is to always look for smarter more efficiently ways to drive real value into our projects and to ensure our service is fit for purpose and tailored to meet all of the client's expectations.
- DSL's approach is to integrate with the client at the earliest opportunity to look for more innovative ways to complete a work scope, this allows us to add real efficiencies to the project and to ensure we continue to meet or exceed our client's expectations.
- Our scope of services and capabilities enables us to provide multi-disciplined personnel using the latest techniques to deliver a wide range of tailored solutions.
- DSL is able to provide a complete simplification and decommissioning service from small to large multi-disciplined projects, incorporating planning, risk assessment, and on/off-site management, through to execution.

Our successful track record of delivering projects in a safe and reliable manner has enabled us to develop long term relationships and retain contracts with our customers worldwide.

Some of the decommissioning services we can offer are detailed below however this list is non exhaustive.

- FEED Studies
- Design and Engineering solutions
- Comprehensive Surveys E&I, Mechanical, Structural, Piping
- Project planning
- Detailed work pack creation
- E&I abandonment
- Interface works
- Vent/comms tower removal
- Installation of Lifting Pad-eyes & trunnion boring, and welding
- Hot cutting (Oxy - Propane) &
- Cold Cutting (abrasive water jetting)
- Heavy lift rigging design/ creation of Lift plans
- Caisson, Riser and J Tube removal
- Weight Shedding
- Fabrication & Installation of Underdeck rigging and cutting platforms
- Pre-lift Module strengthening
- Air Gapping of process & utilities systems
- Cutting deck penetrations and sling path clearing
- Rope access operations (all trades)
- Topside/ Jacket separation



DSL have a comprehensive E&I department that offers specialised E&I services to the energy sector.

We can support your E&I requirements from a single technician to a full E&I project team.

Our clients can be confident that the E&I personnel on their asset are supported by our E&I support structure consisting of Project Managers, Engineers and Designers. Our offshore E&I technicians can be supplied with rope access competency mitigating the need for more conventional time consuming and cost defective access methods.

DSL have the ability to provide Electrical & Instrumentation services from conception through to completion on Brownfield and Greenfield assets as follows:



- Planning & Risk Integration
- Detailed Surveys,
- Reporting & Design Reviews
- Full E&I installation works.
- Electrical Inspection & Testing Services
- E&I Abandonment & Decommissioning
- Rope Access E&I personnel supply

- E&I Design & Engineering Services.
- Constructability, Feasibility, Operability, Maintainability
- Pre-commissioning & Commissioning
- Close out & Maintenance Schedules
- Electrical & Instrument Maint.
- Qualified E&I personnel supply
- E&I Surveys & Work packs



Reliable rope access services from our skilled experts

DSL is an IRATA approved company (8016/O) and provides rope access technicians for both offshore and onshore requirements, worldwide.



- Our rope access personnel stand out from most of our competitors in that all of our Rope Access personnel have a core trade, they include Welders, Electricians, Instrument techs, Platers, Pipe-fitters Riggers, as well as Inspection personnel.
- This enables us to support a diverse range of customer requirements from simple/complex rigging exercises, inspection activities, through to electrical, structural and piping work-scopes, as well as new construction and/or decommissioning on all onshore and offshore assets.
- We maintain a rope access workforce of approximately 60 people throughout the year, with extra personnel taken during peak periods. All of our personnel can be assessed on our in-house training tower by our Rope access Manager to give us and our clients the assurance that the DSL personnel we mobilise are amongst the finest in the industry.
- Our Rope Access Services are supported by our comprehensive Safety Management System that ensures every element of our operations is conducted in a controlled manner, ensuring our personnel and your project incur minimal risk from conception through to completion. This is subsequently reflected in our safety record.





# Our offshore personnel

DSL has the experience, qualifications, and resources to support your project, safely and efficiently at any location, worldwide.

Our offshore personnel are some of the most experienced, productive and safety conscious that you will find in the industry. Many have worked together for a number of years, accumulating experience on every type of workscope associated with offshore assets and structures.

- Safety of our Personnel and those affected by our operations is paramount, subsequently you will find that DSL has the very highest commitment to providing the safest possible site personnel in the industry.
- We have undertaken a comprehensive programme of internal and external training and competency assessment, regardless of the experience of our people. It enables us to provide tangible evidence that the personnel we supply to you are simply the best-trained in the industry.
- This provides us with the safe knowledge that we are doing everything possible to protect and enhance the safety of our people, while giving you the confidence to know that the DSL personnel on your asset know exactly what they are doing, and are doing it safely.
- A key factor to our quality & productivity is that our people are full-time employees of the company, this allows us to invest in our people with additional training and this allows our personnel to focus on getting the job completed safely and on schedule rather than worrying about where their next job is coming from.
- However, continued employment is only sustained through continuation of contracts. We achieve this through our customers recognising that our pro-active approach to enhancing our standards provides material benefits including the elimination of risk.

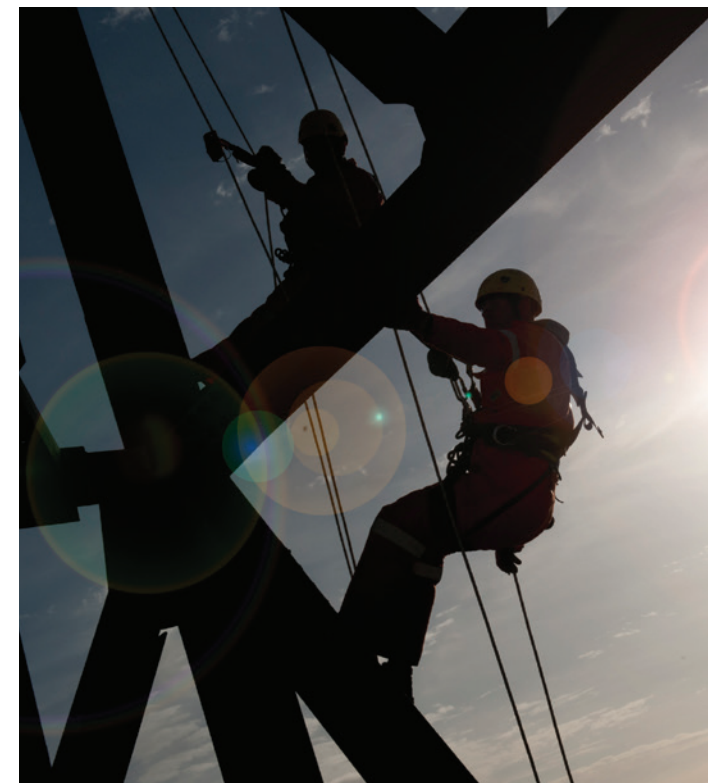
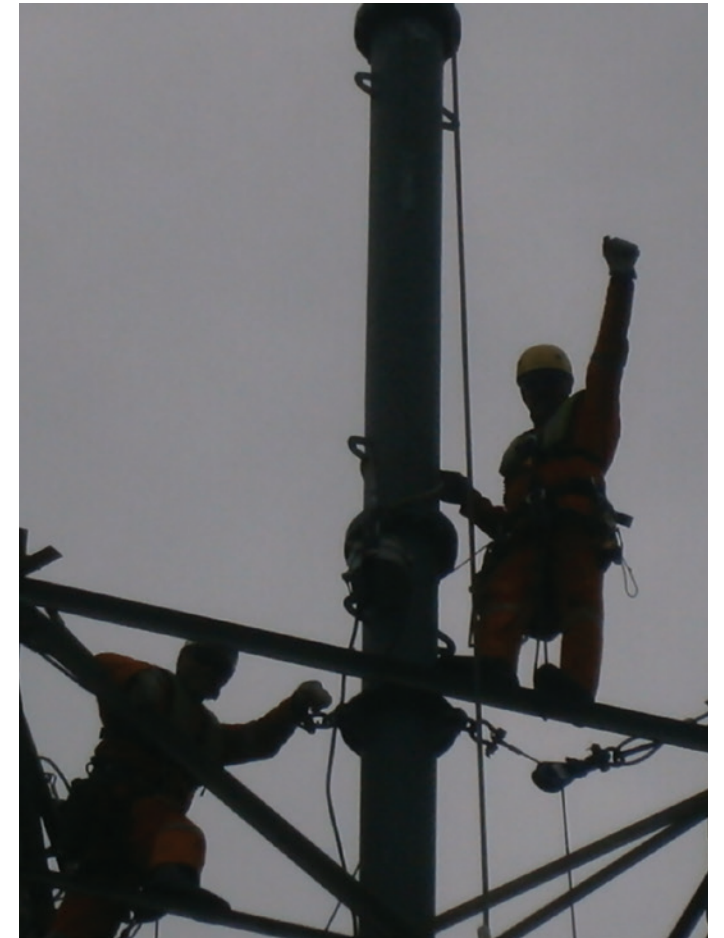


## A worldwide resource of experts to support you

DSL can supply multi-disciplined technicians to local and international operators and specialise in being able to provide a fast mobilisation of qualified personnel to the clients asset - sourcing and mobilising labour from a single operative to a complete barge campaign crew on long or short duration contracts.

- Construction Superintendents
- Construction Supervisors
- Foreman and Charge-hands
- Coded welders (all materials and methods)
- Level 3/4 OPITO and/or NVQ Riggers
- Platers
- Pipefitters
- Electrical Technicians (Complex)
- Instrument Technicians LV/HV
- Storeman
- Level 1, 2 and 3 IRATA Rope Access Technicians (all trades)
- Crane Operator
- Materials Controllers
- Deck Crew
- Safety Advisors
- DROPS Technicians
- Inspection Technicians Ultrasonic, Magnetic Particle and Eddy Current.
- Rope Access Technical Authority
- LOLER Appointed Person

All trades can be supplied with or without a Rope Access competency, all Rope Access technicians can be trade tested prior to mobilisation to the asset on our In-house training frame and will hold current IRATA qualification to the relevant level, this in turn allows our clients the reassurance that the personnel on their assets are competent to complete the works safely and efficiently.







#### Head Office

Falcongate House  
Faraday Road  
Harfreys Industrial Estate,  
Great Yarmouth  
Norfolk  
NR31 0NF  
Tel: **+44 (0) 1493 669141**  
Fax: **+44 (0) 1493 668409**  
Email: **enquiries@derricksl.com**

#### Aberdeen, Scotland

Suite 2, International Base  
Greenwell Road, East Tullos  
Industrial Estate, Aberdeen,  
AB12 3AX,  
Tel: **+44 1224 640700**  
Fax: **+44 1224 640900**  
Email: **enquiries@derricksl.com**

#### Joulon Services DMCC – Head Office

Unit 2, 8th Floor  
One JLT Tower  
Jumeirah Lakes Towers  
Dubai  
UAE  
P.O. Box 34994  
Tel: **+971 4 449 7747**  
**www.joulon.com**

#### DUBAI, UAE

Suite 202, Palace Tower 1  
Dubai Silicon Oasis, PO Box 75971  
Dubai, United Arab Emirates  
Tel: **+971 4 326 2822**  
Fax: **+971 4 326 2298**  
Email: **enquiries@derricksl.com**

For more information on the services we can offer our clients -  
Please visit our company website

**www.derricksl.com**

